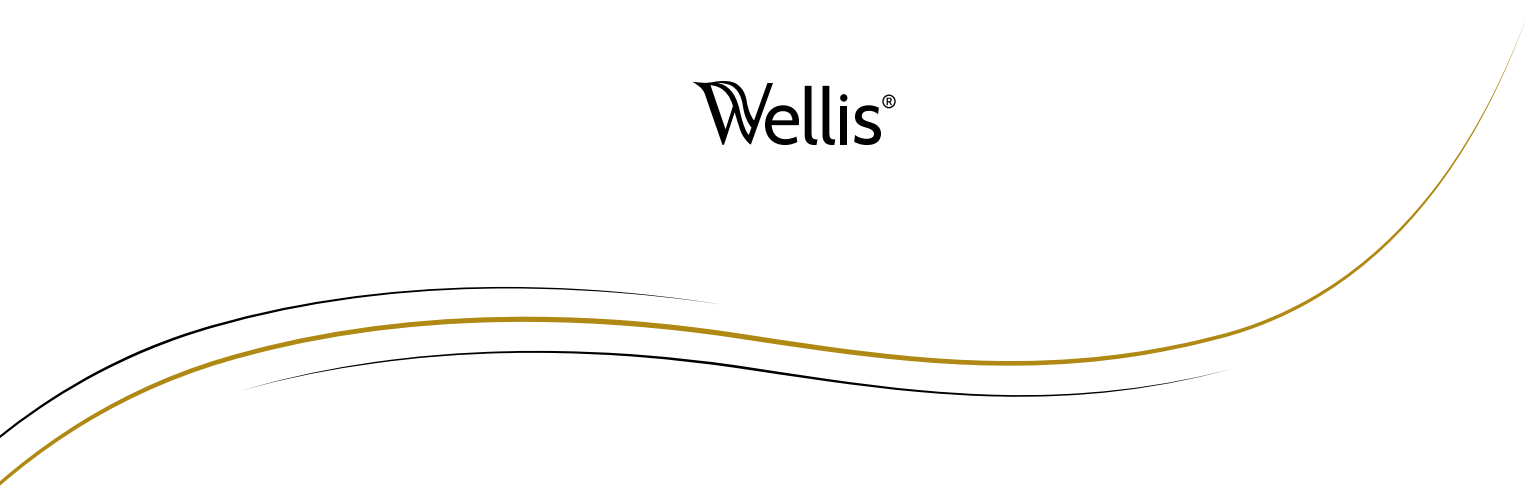


Wellis®



HUNGARIAN COMPANY, EUROPEAN QUALITY, 21ST CENTURY TECHNOLOGY

As a Hungarian manufacturer, Wellis Magyarország Zrt. is the absolute market leader among Hungarian manufacturers and distributors of spa equipment. The family business, founded in the early 2000s with just a few people, today engages 500 employees in the manufacture of premium spas and sanitary equipment of European quality, and serves nearly 500 partners in its domestic and international network. In the first years after its foundation, the Wellis product catalogue consisted entirely of imported wellness products, but in 2005 it started marketing private label products at several of its own stores and franchises. The imported product range of the early years was replaced by a multitude of internally developed and manufactured wellness products. In the spring of 2010, the first 7,000 m² bath tub and spa factory was built, with several production lines using robotic units to meet the emerging needs. Making use of the advantages of our own complex and domestic production capabilities, from year to year we were able to double our performance in terms of produced quantities.

10,000 SPAS PRODUCED ANNUALLY

Wellis has recently reached a new milestone. Thanks to our excellent product quality and outstanding export activity, today Wellis products are present in almost all European countries. Increasing market demands and the high-quality production technology of the 21st century made it necessary to construct a new factory with a floor area of nearly 10,000 m². Thanks to the complex, completed in 2015, the company is facing a huge increase in capacity. So, within a few years, as many as 20,000 families may enjoy the wellness experience offered by high quality spas made in Hungary!

MANUFACTURING IN EUROPE

“When designing our tubs, we make every effort to meet as many ergonomic requirements as possible. We constantly strive for innovation, which is why our products are developed together with our design engineers. Production uses an area of over 17,000 m², equipped with the most modern robotics technology. This is how the perfectly designed product is tested on the production line in short order, and then presented to our customers. Thanks to our own development and production, we have full understanding of the product, which is essential for precision.

During the manufacture of our products, we always use the best quality materials, backed up by long years of supplier experience. Excellent product quality is at least as important for us as it is for our clientele. If we did not pay attention to the above, and were not concerned about continuous development, we would have never made it to the top of European spa production.

We hope to continue our development in the future. In the near future, we plan to increase our production quality and quantity as well as the number of our employees by implementing several major projects.”

WELLIS: PRESENT AND FUTURE

There is no better proof of international recognition for Wellis than the numerous awards won at international fairs, the result of excellent quality and more than 10 years of professional experience. We participated at many domestic and international trade fairs where, in addition to attracting new customers, it was our goal to maintain and build on our existing customer relationships.

The production and logistics facilities at the site of Wellis Magyarország Zrt. – with more than 300 foreign partners and an extensive domestic partner network – now amount to a floor area of over 35,000 m². In addition to producing bath tubs and spas, in 2016 we started the manufacture of swim spas as well. Our newest greenfield investment – to be completed in the spring of 2019 – adds another 10,000 m² to the useful area of our site in the form of a multi-storey warehouse. The new warehouse itself is suitable for the storage of 4,000 swim spas, providing flexibility to our partners. Overall, more than 700 spas and 20-30 high quality counter-current swim spas can be produced monthly at our production halls.

As a result of its steady development in recent years, Wellis has become Europe's largest spa manufacturer and also entered the American spa manufacturer market – which is considered the stronghold of spa manufacturing. The Company's vision for the coming years is to become one of the world's top manufacturers, offering premium solutions in the wellness segment from the heart of Europe.



Wellis spa production video



MADE IN
EUROPE



WELLIS BUILDING COMPLEXES IN THE HEART OF EUROPE

EXPERT OPINION

WE REQUESTED DR. ANDRÁS SZABÓ, SPECIALIST IN INTERNAL MEDICINE, TO COMMENT ON THE POSITIVE EFFECTS OF THE SPAS WE PRODUCE, AND TO SHARE WITH US HIS PERSONAL EXPERIENCE.

"Would you like to sit down?" – I asked my patient automatically, who came through the entrance to my office in a way weirdly similar to the previous patient. The answer was supported by a definite motion, made absolutely clear by non-verbal communication.



"No, I can't, my back really hurts!"

These are the complaints I probably hear the most

often during the daily routine of my work, and – like iceberg peaks – they indicate syndromes resulting from the civilizational harm of our age, including a sedentary way of life.

We stay seated in the car, on the subway, in our home office, and at our place of work. Our head is tilted in the same position for hours waiting for the working day to end, and often our rest time is compromised by a poorly chosen pillow or mattress.

Degenerative conditions result from wear on the spine and weight-bearing joints caused by calcification, due to our sedentary lifestyle and the monotony of work areas. Injuries from an ill-timed sporting event may similarly result in disability that can be prolonged for weeks.

During the acceleration of our comfortable lifestyle, usually those activities are omitted which could compensate for the forced postures causing such conditions. We spend a lot on healthy foods, or on buying various unnecessary cardio machines to deal with extra weight, and it is only the compassionate

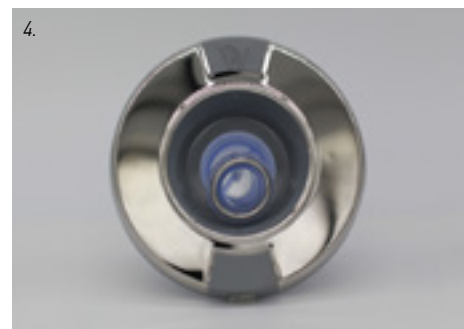
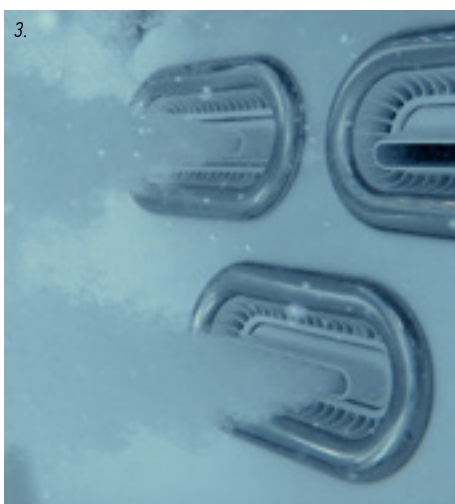
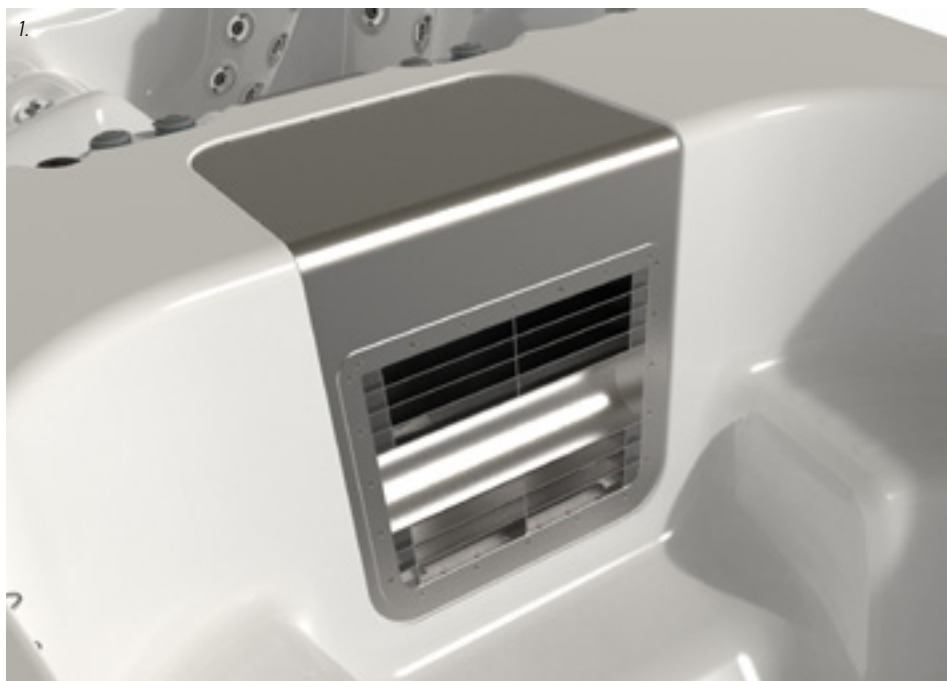
touch of our spouse that sometimes reminds us of the life-saving, neck-massaging water jets in open winter pools.

"Don't stop!" sounds the cry for relaxation after a half-minute massage, but it is impossible to expect helping hands to continuously save us at the end of a busy day.

However, this experience of full relaxation should not be restricted to an exceptional weekend once a year – it can be made part of your home!

You can experience this regeneration of not only the neck muscles, but also to all the groups of muscles in the core, and also imitate the experience of weightlessness! In your own home!





•
 While designing its spas, Wellis considered special anatomical aspects, and designed jets suitable for targeting the skeletal muscles and connective tissues that are most exposed to everyday loads.
 •

Similar to the “tangentor” technique routinely used in rheumatology treatments, the turbulent flow of water increases the blood supply to your muscles, relaxing them, and thus speeds up metabolism and regeneration.

By reaching different muscle groups – in particular the muscles of the lower limbs – this has positive physiological effects not only on striated muscle tissue, but also reduces leg tension sensations by supporting venous circulation, and thus reduces the incidence of lower limb swelling as well!

The rotating head units, products of modern technical innovation, are able to reach larger areas with lower pressure, while fixed jets can massage body fibers more deeply. Thanks to the unique MagmaJet™, you can experience total relaxation and flotation, and be regenerated by relaxing all of your muscle groups and taking a load off your joints!

1. W-Flow system – 180m³/h capacity, 50-60 cm flow width.

2. W-Power turbine – capable of moving 50-160 m³ water per hour, with a power draw of only 7 A.

3. Swim spa river jet – 340l/min capacity, adjustable direction and flow intensity.

4. Our rotating jets provide circular, softer massage over a larger body area.

5. Our fixed jets provide an intense massage experience by focusing water spouts on one body part.

6. One Wellis MagmaJet™ jet has the full capacity of a 3HP massage pump. You can lie on the surface and enjoy weightless flotation.



VARIOUS SITTING AND RECLINING PLACES CAN BE FORMED THROUGH CUSTOMIZED DESIGN OF THE DIFFERENT JETS, EACH OFFERING SPECIFIC MASSAGE THERAPIES.

The Company's research group designed treatment areas within the tubs which offer different physiological effects in addition to pure experience. The form of the seats matches the body shape so that you can spend even more hours in the spa. To meet various needs, the seats were designed with a variety of jets

in arrangement and composition, so that everyone can find the ideal seat (the arrangement of jets may differ for each tub).

Another exciting development is the Vario Pods massage area, with its "patting" technique reaching deep fibers as well.

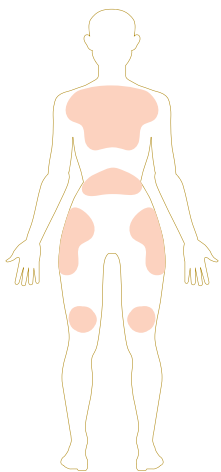
The Pulsar™ massage system is unique to the Wellis Everest and Olympus spas. The solenoid valves rhythmically open and close the jets,

creating a pulsating massage moving along the body of the bather. This therapy, similarly to manual massage, stimulates blood circulation and the evacuation of toxins from the body... and of course, it is incredibly relaxing, too.

OUR SPAS OFFER THE FOLLOWING MASSAGE SEATS*:

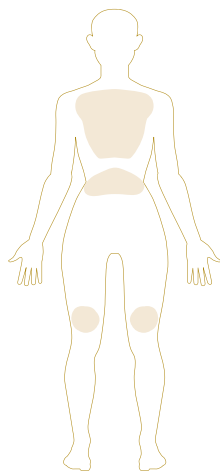
**RELAX
MESSAGE SEAT**

It targets the regeneration of the shoulder girdle and the longitudinal trunk muscle tissues, as well as the hip flexor muscles and the knee extensor muscles – the muscle groups most exposed to everyday loads.



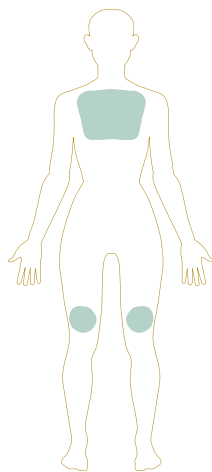
**EXPERT
MESSAGE SEAT**

Its adjustable jets can have physiological effects with customized directions and strength.



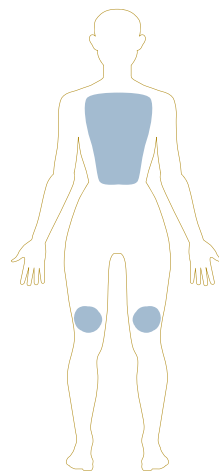
**COOL DOWN
MESSAGE SEAT**

The armchair design provides relaxation after training; its psychical and calming effect should be mentioned in addition to the recovery of physiological functions.



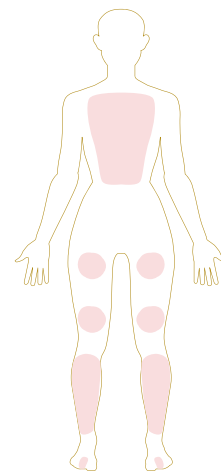
**FOCUS
MESSAGE SEAT**

It offers its user an experience similar to the Expert effect, relaxing the longitudinal trunk muscle tissues, and passively exercising the hip and the thigh flexor and extensor muscle groups.



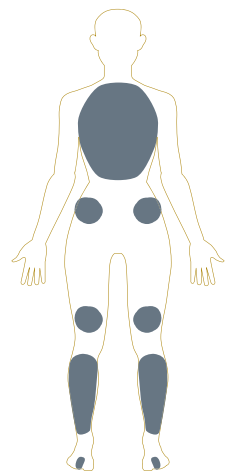
**BODY FLOW
MESSAGE SEAT**

The massage seat with the most intensive physiological effect; in addition to the trunk's muscle fibers, it also has effects on venous and lymphatic circulation in the lower limbs, in this way bringing relief to vein valves.



**INTENSO
MESSAGE SEAT**

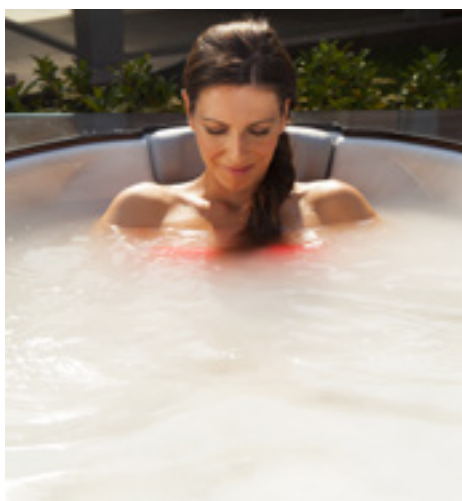
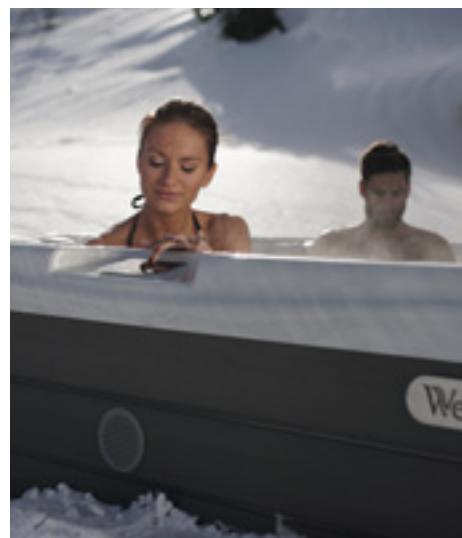
The most refreshing massage seat. The favorite of professional athletes. After exhaustive and intensive training, it ensures the regeneration of the most critical areas, the back and leg muscles.



* The layout of the jets may vary for each tub in the different seat designs.



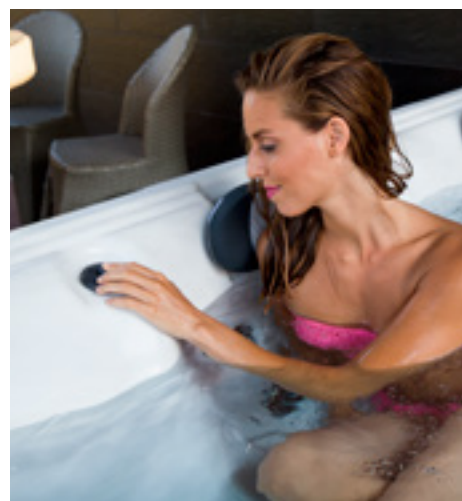
The Everest spa offers you a wide variety of massage experiences



Oxygen Therapy™ for the health and beauty of skin



Light therapy supports deep relaxation



Aromatherapy can be added for a perfect hydro massage experience

It is not only our skeletal and muscle system that needs care to balance everyday loads. Our skin, the organ that communicates with the outside world the most – also requires attention, since everyday mechanical, UV and thermal effects may lead to skin deterioration and premature aging if no attention is paid to regeneration during everyday “use”!

A special function is Oxygen Therapy™, with positive effect – in addition to the ones mentioned above, and supporting venous and lymphatic circulation – to the skin and its components (e.g. sweat glands, sebaceous glands, follicles), too. It not only improves skin oxygenation and hydration, but also removes impurities.

In 1994, Lothar Bode, a German dermatologist, developed an **oxygen therapy machine which he used for treating patients with eczema, psoriasis, and skin cancer with excellent results.**

The essence of the therapy was to deliver higher levels of oxygen to the subcutaneous connective tissue, which – by stimulating collagen synthesis, metabolism and self-healing processes – led to significant results not only in healing, but also in the prevention of skin diseases.

Inspired by this excellent study and the innovations of the improved oxygen therapy, Wellis's innovation, Oxygen Therapy™ is now available (in our Everest and Olympus spas)!

All the health benefits for skin offered by high-concentration oxygen content in water acting with a physiological effect are now available for everyday use, offered by Wellis spas with Oxygen Therapy™!

The de-stressing of the parasympathetic nervous system's opiate transmitters for complete relaxation can be increased with light therapy and aromatherapy essential oils using aromatherapy cartridges, which complete the complex service offered by Wellis tubs.

“Doctor!” “I have been healed completely!”
 – “What happened? You were hardly able to walk last Friday!”
“My Wellis spa has been delivered!” I need neither sedatives nor painkillers any more! “I can relax and rest again!” Thank you for the advice, I am completely rejuvenated!



POLI-MAX™ REINFORCEMENT

Its excellent thermal insulation properties increase the relaxation time you can comfortably spend in the tub or spa, and at the same time save a significant amount of energy. It also has excellent sound insulation properties. The polyurethane insulation is a more eco-friendly method of reinforcement than glass fiber. It consists of the following layers:

1. Outer acrylic layer with anti-microbial surface treatment.
2. ABS polymer layer increasing its strength and resistance to impacts.
3. Medium density polyurethane layer, applied in two additional layers using robotic technology.



WARRANTY

The manufacturer provides 10-year extended warranty for the users of the tub with regard to the shell structure and configuration.

3-year warranty for the engineering parts covering the tub fittings, the internal pipeline and the jet fittings in case of leaks due to material or manufacturing defects. (Valid if the installation was performed by qualified service.)

QUALITY ASSURANCE

Wellis is committed to the production of high quality products, and this is how we strive to stand out in the market. Our products are TÜV certified, are equipped with CE marking.



ACRYLIC COLORS

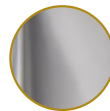
Our spas are offered in 7 (Sterling Silver, Alba Pearl White, Winter Solstice, Storm Clouds, Midnight Canyon, Tuscan Sun and Winter White) shades of acrylic colour, which perfectly match any design or environment.



Sterling Silver



Alba Pearl White



Winter Solstice



Storm Clouds



Midnight Canyon



Tuscan Sun

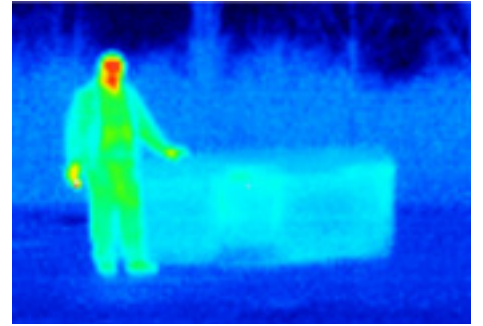


Winter White



SCANDINAVIAN INSULATION

With Scandinavian insulation offered as an option, you can be sure that using your spa will be cost-efficient, even in the coldest winter months. Multi-layered polyfoam insulation under the rim and between the floor pan and the spa cabinet.



SPA INSULATION

Thermographic testing of Wellis spas showed excellent results. The spa in the picture contains 35°C water, while the shell and the thermo cover is only 4°C. Outside temperature is -5°C.

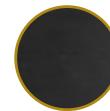


CABINETS

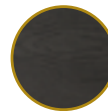
Wood-like, wide horizontal side and corner bars, vacuum-formed ABS plastic corner element, RGB LED lighting. These elements add an intimate atmosphere to the appearance of Wellis spas. The cabinets are available in brown, black and grey.



brown



black



grey



PEAKLINE

The PeakLine product line covers our premium models. In addition to a full line of accessories, modern design and novel style, their extra functions and unique solutions make them the outstanding models of the Wellis brand.



AROMATHERAPY

The tubs are equipped with new, improved aroma pumps. The fragrance is added to the water in liquid form using a pump dispenser.



MAGMAJET™ EXPERIENCE

One Wellis MagmaJet™ jet has the full capacity of a 3HP massage pump. You can lie on the surface and enjoy weightless flotation.



OXYGEN THERAPY™

OXYGEN THERAPY™ improves the oxygen level of water by over 70%.

PULSAR™ MASSAGE SYSTEM

With adjustable program speeds and optional program stops, the potential of the massage jets can be multiplied.



EXCLUSIVE COLOR THERAPY LIGHTING

Exclusive color therapy lighting is built directly into the inner wall around the spa under the water, including 12-20 LEDs, depending on the model.



 **CITYLINE**

Our CityLine product line is a perfect choice for customers for whom the proper balance of value for money and premium quality is important. Our compact models with their unique equipment ensure excellent wellness experiences for any family.



MYMUSIC™ SOUND SYSTEM
Increased Bluetooth range, more powerful subwoofer (300 W), modern speaker design.

NEW CORNER ELEMENT
Stylish look due to precise alignments and new technology.



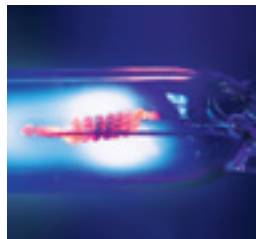
NEW JETS
Modern and sleek design, reliable performance. No bearings.



NEW TRIPLE FOUNTAIN
The 3 illuminated fountain jets triple the wellness experience.



NEW NECK-MASSAGE JETS
The unique vertical massage jets and enhanced ergonomic design of more comfortable headrests relieve your shoulders of daily stress.



UV-C WATER SANITIZER SYSTEM
Hypo-allergenic water disinfection method, killing almost 100% of viruses and bacteria in the water.



NEW WIFI APPLICATION.
The in.touch 2 application for iOS and Android makes it easier to control and program your spa via telephone or tablet, even when you are away from home.

my MYLINE

Our MyLine products represent the entry-level category of the Wellis brand: excellent prices, user-friendly experiences, stylish and well-composed looks. Over 10 models are available to meet all of our customer's needs.



MYMUSIC™ SOUND SYSTEM

The watertight elements installed in the MyMusic™ sound system are of the latest design and highest quality. There will be no more trouble with CDs or Mp3 players, since you can connect to the built-in receiver unit from your mobile phone via Bluetooth.

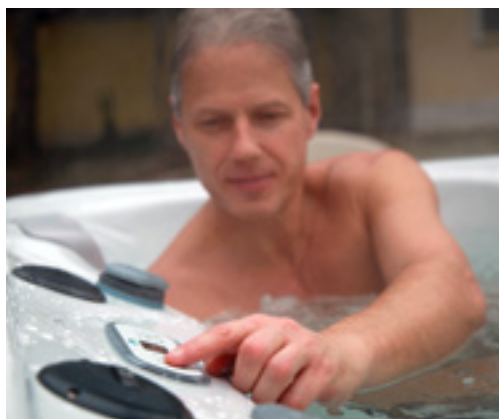
MYJET™ NECK AND SHOULDER MASSAGE

The special arrangement of jets provides intense neck and shoulder massages. The seat follows the body contours, so you can comfortably relax for many hours.



EASY4 CONTROL PANEL

A newly developed high quality control system, designed to perfectly control the bathing experience.



MYSEAT™ – FOR YOU AND YOUR SIGNIFICANT OTHER

In designing the MySeat™ reclining place, our designers eliminated the inconvenience caused by height differences.

The ergonomic design of the heel rest provides a stable reclining area both for male and female customers.

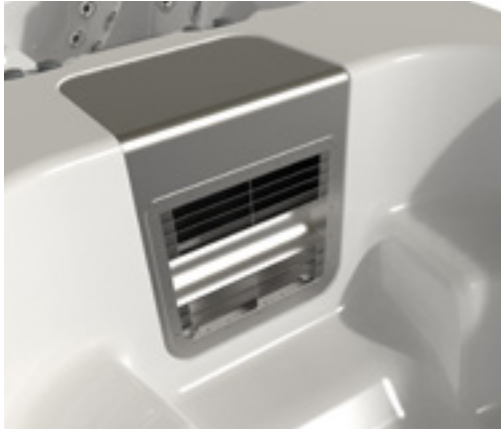


MYHIP™ JETS

Professional waist and hip massage jets that help fat cells accumulated around the hip disappear. Although it was originally developed for women, it is suitable for athletes as well, and for anyone looking for the perfect massage.

 **SWIMLINE**

Our SwimLine product line combines a perfect workout program and a joyful massage experience with minimum space requirement. Thanks to the counter-current system developed by Wellis, you can enjoy the sensation of relaxing in a swimming pool, while actually you are taking care of your body and soul in the comfort of your home.



NEW W-FLOW SYSTEM

The W-Flow counter-current system moves 180m³ water per hour, with a flow width of 50-60 cm. 5 pre-programmed and 3 personalized swim programs provide a variety of exercises for everyone.



AQUASOUL™ SOUND SYSTEM

No more trouble with CDs or Mp3 players, or connect external units via USB cables, since you can connect to the built-in receiver unit from your mobile phone via Bluetooth.



AQUATIC EXERCISE BANDS AND ROWING KIT

The exercise bands, in combination with the oars, offer a genuine rowing experience, and can also be used for a variety of fitness exercises.

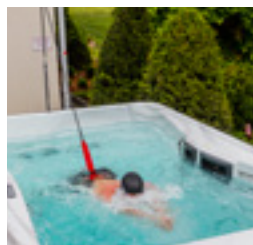


W-POWER TURBINE SYSTEM

The W-Power counter-current turbine is capable of moving 50-160 m³ water per hour, with a power requirement decreased by 75% (only 7A voltage), and at the same time it provides twice as much water flow as swim spa pumps.

SEMI-INGROUND SIDE PANEL

The Rio Grande 2019 swim spa model is also available as a semi-recessed design, which makes it possible to partially sink the tub into the ground without constructing a concrete base.



SWIMMING STICK

It assists the swimmer in staying in the centerline of the swim spa during a workout, but more importantly, it can increase water resistance for the swimmer in the swim spa, requiring more effort during the workout.



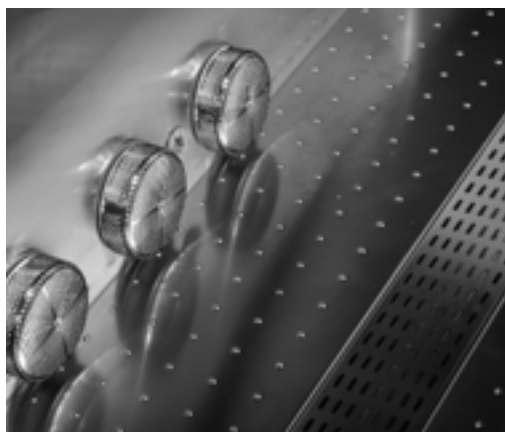
AQUABIKE

Aquabike is recommended for anyone in need of general fitness training, a rehabilitation workout, or who simply enjoy the fun of cycling itself.



INOXLINE

Our InoxLine spas are designed for durability with a robust, timelessly modern look. Thanks to the stainless steel shell and supporting structure, as well as the weather-proof WPS side cover, our InoxLine product family is characterized by an absolutely trendy and visionary look.



MODERN DESIGN

The design of each tiny details aims for perfection.

STAINLESS STEEL

Our stainless steel tub will last for many years to come. Stainless steel is resistant to UV-rays, frost and thermal stresses.



STAINLESS STEEL LADDER

The stylish ladder, with 3 steps and handrails, ensures easy and safe entry.

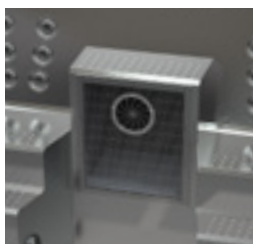


DURABILITY

The 2 mm thick tub shell – made of UV and acid-resistant stainless steel – paired with a steel frame and weather-proof cabinet, is a timeless match.

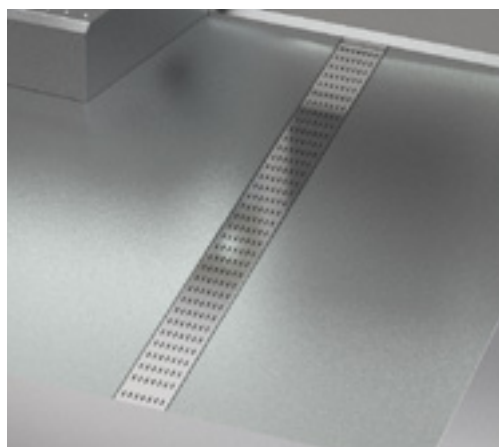
W-POWER TURBINE

The W-Power turbine, working without added air, ensures a water flow similar to rivers.



PEACEFUL RELAXATION AFTER SWIMMING

Thanks to the open inner space, you can easily shift from the swimming area for exercising to the massage seats for peaceful relaxation.



LINEAR DRAIN

The drain, with its classic look, is recessed in the floor of the tub.



PEAKLINE





EXPLORER

Our Explorer spa was specifically designed for those who would like to combine relaxation with conversation. In its facing recliner seats, any conversation becomes effortless. And the Wellis-designed massage jets add to the experience.

Dimensions	2130 × 1600 × 970 mm
Reclining / Sitting places	2 reclining places
Net weight (kg) / Water amount (l)	300 kg/574 l
Frame	WPS
Opt. power requirement	1×27A 230V/50Hz or 3×16A 400V/50Hz
Min. power requirement*	1×14A 230V/50Hz
Total number of jets	36 pcs
Illuminated waterfall	1 pc
Hydro massage pump	2 × 2 HP, single speed
Circulation pump	W-EC pump (0.19 kW)
Water sanitization	UV-C + antibacterial filter
Chromotherapy LED illumination	16 pcs exclusive LEDs + Central + StarLight™ illuminated corner element
Sound system	Aquasoul™ Pro 2.1 Pop-Up
SmartPhone app – wifi connection	yes
Aromatherapy	Liquid Aroma (without fragrance)
Thermo cover	yes



DISCOVERY

Our Discovery spas are perfect for ensuring relaxation for a larger company. A renewed filter house design allows you to enjoy your favorite movies on your tablet.

Dimensions	2180 × 2180 × 970 mm
Reclining / Sitting places	4 reclining / 1 sitting place
Net weight (kg) / Water amount (l)	350 kg/931 l
Frame	WPS
Opt. power requirement	1×37A 230V/50Hz or 3×16A 400V/50Hz
Min. power requirement*	1×24A 230V/50Hz
Total number of jets	51 pcs
Illuminated waterfall	1 pc
Hydro massage pump	1 × 3 HP, single speed
Circulation pump	2 × 2 HP, single speed
Water sanitization	UV-C + antibacterial filter
Chromotherapy LED illumination	16 pcs exclusive LEDs + Central + StarLight™ illuminated corner element
Sound system	Aquasoul™ Pro 2.1 Pop-Up
SmartPhone app – wifi connection	yes
Aromatherapy	Liquid Aroma (without fragrance)
Thermo cover	yes

Acrylic color



Cabinet



Acrylic color



Cabinet



*In case of minimum power connection, the hot tub pump(s) and heating unit cannot be operated simultaneously.



ELBRUS 230

The Wellis Elbrus 230 is extremely well-equipped: recessed jets, UV-C water sanitizer system, chromotherapy water fountain, two anti-microbial filters, chromotherapy LED lighting. In the spacious inner area, there is enough room for the WellDome™ foot massage to be built into the tub floor.

Dimensions	2300 × 2300 × 900 mm
Reclining / Sitting places	7 sitting places
Net weight (kg) / Water amount (l)	410 kg/1,560 l
Frame	WPS
Opt. power requirement	1×43A 230V/50Hz or 3×16A 400V/50Hz
Min. power requirement*	1×30A 230V/50Hz
Total number of jets	78 pcs
Illuminated waterfall	1 pc
Hydro massage pump	3 × 3 HP, single speed
Circulation pump	W-EC pump (0.19 kW)
Water sanitization	UV-C + antibacterial filter 16 pcs exclusive LEDs + Central + StarLight™ illuminated corner element
Chromotherapy LED illumination	
Sound system	Aquasoul™ Pro 2.1 Pop-Up
SmartPhone app – wifi connection	yes
Aromatherapy	Liquid Aroma (without fragrance)
Thermo cover	yes



KILIMANJARO

The Kilimanjaro spa has all that's needed in a premium-category spa: Aqua-Soul™ Pro sound system, Smartphone™ mobile application with WiFi connection, 3 x 3 HP massage pumps, 3 x MicroPlus paper filters and Liquid-Aroma aromatherapy.

Dimensions	2300 × 2300 × 940 mm
Reclining / Sitting places	5 reclining / 1 sitting place
Net weight (kg) / Water amount (l)	410 kg/1,450 l
Frame	WPS
Opt. power requirement	1×43A 230V/50Hz or 3×16A 400V/50Hz
Min. power requirement*	1×30A 230V/50Hz
Total number of jets	64 pcs
Illuminated fountain	2 pcs
Hydro massage pump	3 × 3 HP, single speed
Circulation pump	W-EC pump (0.19 kW)
Water sanitization	UV-C + antibacterial filter 13 pcs exclusive LEDs + Central + StarLight™ illuminated corner element
Chromotherapy LED illumination	
Sound system	Aquasoul™ Pro 2.1 Pop-Up
SmartPhone app – wifi connection	yes
Aromatherapy	Liquid Aroma (without fragrance)
Thermo cover	yes

Acrylic color



Cabinet



Acrylic color



Cabinet



*In case of minimum power connection, the hot tub pump(s) and heating unit cannot be operated simultaneously.

Oxygen Therapy™



EVEREST

The main seat place provides an exceptional massage experience that meets the highest expectations: it has a 2 x 2 HP massage pump, powerful calf massage set, and a back massage system with 5" jets. The massage experience for the second reclining space can be increased by Pulsar™ massage system.

Dimensions	2360 × 2360 × 950 mm
Reclining / Sitting places	2 reclining / 3 sitting places
Net weight (kg) / Water amount (l)	420 kg/1,560 l
Frame	WPS
Opt. power requirement	1×47A 230V/50Hz or 3×16A 400V/50Hz
Min. power requirement*	1×34A 230V/50Hz
Total number of jets	88 pcs
Illuminated waterfall	1 pc
Hydro massage pump	2 × 3 HP, double speed
Circulation pump	2 × 2 HP, single speed
Water sanitization	W-EC pump (0.19 kW)
Water sanitization	UV-C + antibacterial filter
Chromotherapy LED illumination	12 pcs exclusive LEDs + Central + StarLight™ illuminated corner element
Sound system	Aquasoul™ Pro 4.1 Pop-Up
SmartPhone app – wifi connection	yes
Aromatherapy	Liquid Aroma (without fragrance)
Oxygen Therapy™ system	yes
Pulsar™ massage system	yes
Auxiliary control panel	1 + 4 buttons
Heat exchanger preparation	yes
Thermo cover	yes

Acrylic color



Cabinet



OLYMPUS

As many as 9 people can comfortably relax in the Olympus spa that meets the highest needs. You may also enjoy the beneficial effects of warm water in this spa with 7 seats, 2 recliners and a bevy of jets, ensuring a massage experience greater than ever before.

Dimensions	3540 × 2300 × 980 mm
Reclining / Sitting places	2 reclining / 7 sitting places
Net weight (kg) / Water amount (l)	900 kg/2,331 l
Frame	Stainless steel frame
Opt. power requirement	1×47A 230V/50Hz or 3×16A 400V/50Hz
Min. power requirement*	1×34A 230V/50Hz
Total number of jets	88 pcs
Illuminated waterfall	1 pc
Hydro massage pump	2 × 3 HP, double speed
Circulation pump	2 × 2 HP, single speed
Water sanitization	W-EC pump (0.19 kW)
Water sanitization	UV-C + antibacterial filter
Chromotherapy LED illumination	20 pcs exclusive LEDs + Central
Sound system	Aquasoul™ Pro 4.1 Pop-Up
SmartPhone app – wifi connection	yes
Aromatherapy	Liquid Aroma (without fragrance)
Oxygen Therapy™ system	-
Pulsar™ massage system	yes
Auxiliary control panel	1 + 4 buttons
Heat exchanger preparation	yes
Thermo cover	yes

Acrylic color



Cabinet



*In case of minimum power connection, the hot tub pump(s) and heating unit cannot be operated simultaneously.



OPTIONS	EXPLORER	DISCOVERY	ELBRUS 230	KILIMANJARO	EVEREST	OLYMPUS
Scandinavian insulation	o	o	o	o	o	o
Illuminated jets (up to 50 jets)	o	o	✘	✘	✘	✘
Illuminated jets (from 51 jets)	✘	✘	o	o	o	
In.clear water treatment system	o	o	o	o	o	✘
Heat exchanger preparation	✘	✘	✘	✘	✓	✓
Oxygen therapy™ system	✘	o	o	o	✓	✘
Vario Pods (4-6 mechanical massage points)	✘	✘	o	o	o	o

✘ not available | o option | ✓ included



CITYLINE





MANHATTAN

The Manhattan 2018 spa was developed for an overall massage experience, thanks to the positioning of the jets, which was approved by physiotherapists. Its triple-illuminated fountain jets provide a breathtaking sight during evening hours. The touch-screen control panel simplifies operation.

Dimensions	2010 × 1530 × 850 mm
Reclining / Sitting places	2 reclining places
Net weight (kg) / Water amount (l)	280 kg/510 l
Frame	WPS
Opt. power requirement	1×25A 230V/50Hz or 3×16A 400V/50Hz
Min. power requirement*	1×10A 230V/50Hz
Total number of jets	28 pcs
Illuminated fountain	3 pcs
Illuminated waterfall	-
Hydro massage pump	1 × 3 HP, single speed
Circulation pump	W-EC pump (0.19 kW)
Water sanitization	UV-C + antibacterial filter
Chromotherapy LED illumination	10 pcs exclusive LEDs + StarLight™ illuminated corner element
Sound system	MyMusic™ 2.1
SmartPhone app – wifi connection	yes
Aromatherapy	Liquid Aroma (without fragrance)
Thermo cover	yes



MARBELLA

The 4 seats are equipped with different jet arrangements to ensure various massage experiences best suited for each user. In addition to the triple-illuminated splash, it includes a illuminated fountain as well. The Marbella spa ensures pleasant relaxation for a smaller group of friends.

Dimensions	1900 × 1800 × 850 mm
Reclining / Sitting places	4 sitting places
Net weight (kg) / Water amount (l)	280 kg/790 l
Frame	WPS
Opt. power requirement	1×25A 230V/50Hz or 3 × 16A 400V/50Hz
Min. power requirement*	1×10A 230V/50Hz
Total number of jets	30 pcs (2 seats equipped with wrist massage jets)
Illuminated fountain	3 pcs
Illuminated waterfall	1 pc
Hydro massage pump	1 × 3 HP, single speed
Circulation pump	W-EC pump (0.19 kW)
Water sanitization	UV-C + antibacterial filter
Chromotherapy LED illumination	10 pcs exclusive LEDs + StarLight™ illuminated corner element
Sound system	MyMusic™ 2.1
SmartPhone app – wifi connection	yes
Aromatherapy	Liquid Aroma (without fragrance)
Thermo cover	yes

Acrylic color



Cabinet



Acrylic color



Cabinet



*In case of minimum power connection, the hot tub pump(s) and heating unit cannot be operated simultaneously.



ELBRUS

Elbrus 2018 spa combines modern look with traditional values. Each of the 7 seats has different massage jet arrangements, but standard equipment includes the illuminated waterfall, the illuminated fountain, aromatherapy and the 2.1 Hi-Fi system as well.

Dimensions	2180 × 2180 × 900 mm
Reclining / Sitting places	7 sitting places
Net weight (kg) / Water amount (l)	380 kg/1,080 l
Frame	WPS
Opt. power requirement	1×33A 230V/50Hz or 3×16A 400V/50Hz
Min. power requirement*	1×20A 230V/50Hz
Total number of jets	40 pcs
Illuminated fountain	2 pcs
Illuminated waterfall	1 pc
Hydro massage pump	2 × 3 HP, single speed
Circulation pump	W-EC pump (0.19 kW)
Water sanitization	UV-C + antibacterial filter
Chromotherapy LED illumination	16 pcs exclusive LEDs + StarLight™ illuminated corner element
Sound system	MyMusic™ 2.1
SmartPhone app – wifi connection	yes
Aromatherapy	Liquid Aroma (without fragrance)
Thermo cover	yes

Bestseller



PALERMO

Palermo 2018 is the perfect spa for families. Durability, ergonomics and energy efficiency combined in one product. The neck, shoulder, waist and hip massaging jets in the main seat have positive effects on the blood circulation of these areas.

Dimensions	2180 × 2180 × 870 mm
Reclining / Sitting places	2 reclining / 3 sitting places
Net weight (kg) / Water amount (l)	350 kg/1,100 l
Frame	WPS
Opt. power requirement	1×33A 230V/50Hz or 3×16A 400V/50Hz
Min. power requirement*	1×20A 230V/50Hz
Total number of jets	42 pcs (1 seat equipped with wrist massage)
Illuminated fountain	2 pcs
Illuminated waterfall	1 pc
Hydro massage pump	2 × 3 HP, single speed
Circulation pump	W-EC pump (0.19 kW)
Water sanitization	UV-C + antibacterial filter
Chromotherapy LED illumination	16 pcs exclusive LEDs + StarLight™ illuminated corner element
Sound system	MyMusic™ 2.1
SmartPhone app – wifi connection	yes
Aromatherapy	Liquid Aroma (without fragrance)
Thermo cover	yes

Acrylic color



Cabinet



Acrylic color



Cabinet



*In case of minimum power connection, the hot tub pump(s) and heating unit cannot be operated simultaneously.



MALAGA

A bottle of champagne, six glasses, fun company, and let the party begin. The Malaga spa has all the essentials for an all-night party. Thanks to the increased performance and number of the jets, each seat provides a pleasant massage for guests.

Dimensions	2180 × 2180 × 900 mm
Reclining / Sitting places	5 reclining / 1 sitting place
Net weight (kg) / Water amount (l)	350 kg/1,150 l
Frame	WPS
Opt. power requirement	1×33A 230V/50Hz or 3×16A 400V/50Hz
Min. power requirement*	1×20A 230V/50Hz
Total number of jets	40 pcs
Illuminated fountain	3 pcs
Illuminated waterfall	1 pc
Hydro massage pump	2 × 3 HP, single speed
Circulation pump	W-EC pump (0.19 kW)
Water sanitization	UV-C + antibacterial filter
Chromotherapy LED illumination	16 pcs exclusive LEDs + StarLight™ illuminated corner element
Sound system	MyMusic™ 2.1
SmartPhone app – wifi connection	yes
Aromatherapy	Liquid Aroma (without fragrance)
Thermo cover	yes



ACAPULCO DEEP-IN

When designing the Acapulco Deep-in spa, no compromise was accepted in term of design and comfort. The waveless spa ensures an exceptional atmosphere – in our home we might have the sensation of relaxing in the wellness spa of a 5-star hotel.

Dimensions	diameter: 2,400 mm
Reclining / Sitting places	6 sitting places
Net weight (kg) / Water amount (l)	250 kg/1,470 l
Frame	Stainless steel frame
Opt. power requirement	1×34A 230V/50Hz or 3×16A 400V/50Hz
Min. power requirement*	1×21A 230V/50Hz
Total number of jets	28 pcs
Illuminated waterfall	-
Hydro massage pump	3 × 2 HP, single speed
Circulation pump	W-EC pump (0.19 kW)
Water sanitization	UV-C + sand filter
Chromotherapy LED illumination	12 pcs exclusive LEDs + Central
Auxiliary control panel	1 x 4 buttons
SmartPhone app – wifi connection	yes
Buffer tank (standard)	yes
Sand filter	Ø450 mm
Thermo cover	yes

Acrylic color



Cabinet



Acrylic color



*In case of minimum power connection, the hot tub pump(s) and heating unit cannot be operated simultaneously.



OPTIONS	MANHATTAN	MARBELLA	ELBRUS	PALERMO	MALAGA	ACAPULCO DEEP-IN
Scandinavian insulation	o	o	o	o	o	✘
Illuminated jets (up to 50 jets)	o	o	o	o	o	o
In.clear water treatment system	o	o	o	o	o	o
Sand filter system	✘	✘	✘	✘	✘	✓
Sand filter ready	✘	✘	✘	✘	✘	✓
Automatic filler for buffer container	✘	✘	✘	✘	✘	o

✘ not available | o option | ✓ included



MYLINE





SUN PLUG&PLAY

Our Sun spa, spacious enough to include 26 jets, is still small enough to fit almost anywhere – on a shady terrace, or in a slightly bigger bathroom. Each function can be easily controlled through the Easy4 control panel, while the Plug&Play system ensures simple connection.

Dimensions	2000 × 1500 × 700 mm
Reclining / Sitting places	2 reclining / 1 sitting place
Net weight (kg) / Water amount (l)	230 kg/ 551 l
Frame	Impregnated solid wood
Opt. power requirement	1×19A 230V/50Hz
Min. power requirement*	1×6A 230V/50Hz
Total number of jets	26 pcs
Illuminated waterfall	-
Hydro massage pump	1 × 1.5 HP, double speed
Water sanitization	superfine paper filter
Chromotherapy LED illumination	10 pcs exclusive LEDs
Sound system	-
MyJet™	-
MySeat™	-
MyHip™	-
Plug&Play	yes
Thermo cover	yes



SUN FAMILY PLUG&PLAY

If you have limited space, but you insist on the advantages a 5-person small tub can offer, choose Sun Family spa. This model is characterized by straight lines and comfortable, soft design.

Dimensions	1900 × 1900 × 750 mm
Reclining / Sitting places	2 reclining / 3 sitting places
Net weight (kg) / Water amount (l)	270 kg/ 700 l
Frame	Impregnated solid wood
Opt. power requirement	1×20A 230V/50Hz
Min. power requirement*	1×10A 230V/50Hz
Total number of jets	36 pcs
Illuminated waterfall	-
Hydro massage pump	1 × 3 HP, double speed
Water sanitization	superfine paper filter
Chromotherapy LED illumination	8 pcs exclusive LEDs
Sound system	-
MyJet™	-
MySeat™	-
MyHip™	-
Plug&Play	yes
Thermo cover	yes

Acrylic color



Cabinet



Acrylic color



Cabinet



*In case of minimum power connection, the hot tub pump(s) and heating unit cannot be operated simultaneously.



MARS

The two reclining seats in the Mars spa, positioned next to each other, ensure excellent relaxation for couples. The design of the MySeat™ reclining place eliminates inconveniences caused by differences in height. Due to its 76 cm height, this model easily fits through a normal front door.

Dimensions	2130 × 1600 × 750 mm
Reclining / Sitting places	2 reclining / 1 sitting place
Net weight (kg) / Water amount (l)	250 kg/660 l
Frame	Impregnated solid wood
Opt. power requirement	1×20A 230V/50Hz
Min. power requirement*	1×7A 230V/50Hz
Total number of jets	37 pcs
Illuminated waterfall	-
Hydro massage pump	1 × 2 HP, double speed
Water sanitization	Ozone generator + superfine paper filter
Chromotherapy LED illumination	12 pcs exclusive LEDs
Sound system	MyMusic™ 2.0
MyJet™	-
MySeat™	yes
MyHip™	-
Plug&Play	option
Thermo cover	yes



TITAN

The main characteristic of our Titan hot tubs is outstanding comfort, ensured by its ergonomic seats and the extra wide head rests. 31 carefully arranged massage jets, the waterfall built in the side wall of the tub, and MyMusic™ 2.0 sound system enhances the bathing experience.

Dimensions	2010 × 1530 × 770 mm
Reclining / Sitting places	1 reclining / 2 sitting places
Net weight (kg) / Water amount (l)	280 kg/720 l
Frame	Impregnated solid wood
Opt. power requirement	1×23A 230V/50Hz
Min. power requirement*	1×10A 230V/50Hz
Total number of jets	31 pcs
Illuminated waterfall	1 pc
Hydro massage pump	1 × 3 HP, double speed
Water sanitization	Ozone generator + superfine paper filter
Chromotherapy LED illumination	10 pcs exclusive LEDs + Central
Sound system	MyMusic™ 2.0
MyJet™	-
MySeat™	-
MyHip™	-
Plug&Play	option
Thermo cover	yes

Acrylic color



Cabinet



Acrylic color



Cabinet



*In case of minimum power connection, the hot tub pump(s) and heating unit cannot be operated simultaneously.



EARTH

This 5-person, compact Earth model round spa is one of our best offers in terms of value for money. Thanks to its round design, it is a perfect place for a pleasant conversation with friends of family. In addition, the Earth model has the essentials for an ideal spa.

Dimensions	Ø2180 × 910 mm
Reclining / Sitting places	5 sitting places
Net weight (kg) / Water amount (l)	300 kg/1,045 l
Frame	Impregnated solid wood
Opt. power requirement	1×20A 230V/50Hz
Min. power requirement*	1×7A 230V/50Hz
Total number of jets	22 pcs
Illuminated waterfall	-
Hydro massage pump	1 × 2 HP, double speed
Water sanitization	Ozone generator + superfine paper filter
Chromotherapy LED illumination	10 pcs exclusive LEDs
Sound system	MyMusic™ 2.0
MyJet™	-
MySeat™	-
MyHip™	-
Plug&Play	option
Thermo cover	yes



PLUTO

Our Pluto spa provides enough room for as many as 5 people, and it still fits even small spaces comfortably. This spa is designed with two reclining places, using the MySeat™ feature. In addition, one of the seats is equipped with MyJets™ design, which eliminates neck and shoulder pains.

Dimensions	2000 × 2000 × 890 mm
Reclining / Sitting places	2 reclining / 3 sitting places
Net weight (kg) / Water amount (l)	270 kg/960 l
Frame	Impregnated solid wood
Opt. power requirement	1×23A 230V/50Hz
Min. power requirement*	1×7A 230V/50Hz
Total number of jets	42 pcs
Illuminated waterfall	-
Hydro massage pump	1 × 3 HP, double speed
Water sanitization	Ozone generator + superfine paper filter
Chromotherapy LED illumination	16 pcs exclusive LEDs
Sound system	MyMusic™ 2.0
MyJet™	yes
MySeat™	yes
MyHip™	-
Plug&Play	option
Thermo cover	yes

Acrylic color



Cabinet



Acrylic color



Cabinet



*In case of minimum power connection, the hot tub pump(s) and heating unit cannot be operated simultaneously.



JUPITER

Our Jupiter spa has ergonomically designed seats, 46 massage jets, and a bluetooth sound system with two speakers. The spacious corner space with neck and shoulder massage will be a favorite for everyone.

Dimensions	2000 × 2000 × 870 mm
Reclining / Sitting places	5 reclining / 1 sitting places
Net weight (kg) / Water amount (l)	300 kg / 1,100 l
Frame	Impregnated solid wood
Opt. power requirement	1×23A 230V/50Hz
Min. power requirement*	1×10A 230V/50Hz
Total number of jets	40 pcs
Illuminated fountain	2 pcs
Hydro massage pump	1 × 3 HP, double speed
Water sanitization	Ozone generator + superfine paper filter
Chromotherapy LED illumination	15 pcs exclusive LEDs
Sound system	MyMusic™ 2.0
MyJet™	yes
MySeat™	-
MyHip™	yes
Plug&Play	option
Thermo cover	yes



MERCURY

Get refreshed from head to toe in the comfortable reclining spots in our Mercury spa, with up to five other people seated around you. Two hydro massage pumps with 3 HP each and 82 jets ensure the perfect massage experience for all 6 people.

Dimensions	2130 × 2130 × 910 mm
Reclining / Sitting places	5 reclining / 1 sitting place
Net weight (kg) / Water amount (l)	350 kg / 1,300 l
Frame	Impregnated solid wood
Opt. power requirement	1×33A 230V/50Hz or 3×16A 400V/50Hz
Min. power requirement*	1×20A 230V/50Hz
Total number of jets	82 pcs
Illuminated waterfall	1 pc
Hydro massage pump	1 × 3 HP, double speed 1 × 3 HP, single speed
Water sanitization	Ozone generator + superfine paper filter
Chromotherapy LED illumination	12 pcs exclusive LEDs
Sound system	Mymusic 4.0
MyJet™	-
MySeat™	-
MyHip™	yes
Plug&Play	-
Thermo cover	yes

Acrylic color



Cabinet



Acrylic color



Cabinet



*In case of minimum power connection, the hot tub pump(s) and heating unit cannot be operated simultaneously.



VENUS

Our Venus spa provides an unforgettable experience for 6 people at a time. The arrangement of the jets in the seats ensures optimum neck and shoulder massage, while the MyHip™ jets provide professional-level waist and hip massage. This model also includes a MySeat™ reclining place.

Dimensions	2150 × 2150 × 870 mm
Reclining / Sitting places	5 reclining / 1 sitting places
Net weight (kg) / Water amount (l)	330 kg/1,045 l
Frame	Impregnated solid wood
Opt. power requirement	1×27A 230V/50Hz or 3×16A 400V/50Hz
Min. power requirement*	1×14A 230V/50Hz
Total number of jets	49 pcs
Illuminated fountain	-
Hydro massage pump	1 × 2 HP, double speed 1 × 2 HP, single speed
Water sanitization	Ozone generator + superfine paper filter
Chromotherapy LED illumination	18 pcs exclusive LEDs
Sound system	MyMusic™ 4.0
MyJet™	yes
MySeat™	yes
MyHip™	yes
Plug&Play	-
Thermo cover	yes



SATURN

Our Saturn spa is a product of thorough design. Once you dive in, you will never want to get out. Both reclining seats offer full massage for the feet and calves. It is spacious enough for a party, and a perfect choice for peaceful family bathing.

Dimensions	2300 × 2300 × 880 mm
Reclining / Sitting places	2 reclining / 3 sitting places
Net weight (kg) / Water amount (l)	350 kg/1,400 l
Frame	Impregnated solid wood
Opt. power requirement	1×27A 230V/50Hz or 3×16A 400V/50Hz
Min. power requirement*	1×14A 230V/50Hz
Total number of jets	50 pcs
Illuminated waterfall	-
Hydro massage pump	1 × 2 HP, double speed 1 × 2 HP, single speed
Water sanitization	Ozone generator + superfine paper filter
Chromotherapy LED illumination	18 pcs exclusive LEDs
Sound system	MyMusic™ 4.0
MyJet™	yes
MySeat™	yes
MyHip™	-
Plug&Play	-
Thermo cover	yes

Acrylic color



Cabinet



Acrylic color



Cabinet



*In case of minimum power connection, the hot tub pump(s) and heating unit cannot be operated simultaneously.

New Product



HOLIDAY LET SPA

Our newest spa was specifically designed for community use! It is easy to operate with the 2 single-button topside panels, so the bathers don't have to worry about programming. They can only control the massage function and the LED illumination. It can be programmed via WiFi connection.

Dimensions	2000 × 2000 × 870 mm
Reclining / Sitting places	5 reclining / 1 sitting places
Net weight (kg) / Water amount (l)	350 kg/1,150 l
Frame	Impregnated solid wood
Opt. power requirement	1×20A 230V/50Hz
Min. power requirement*	1×12A 230V/50Hz 1×29A 230V/50Hz (P&P vers.) 1×12A 230V/50Hz (P&P vers.)
Total number of jets	40 pcs
Illuminated waterfall	-
Hydro massage pump	2 × 1.5 HP, double speed
Water sanitization	Chlorine dispenser + superfine paper filter
Chromotherapy LED illumination	15 pcs exclusive LEDs
Sound system	-
MyJet™	-
MySeat™	-
MyHip™	-
Plug&Play	yes
Thermo cover	yes

OPTIONS	Scandinavian insulation	SmartPhone app – WiFi connection
SUN	✘	o
SUN FAMILY	✘	o
MARS	o	o
TITAN	o	o
EARTH	✘	o
PLUTO	o	o
JUPITER	o	o
MERCURY	o	o
VENUS	o	o
SATURN	o	o
HOLIDAY LET SPA	o	✓

✘ not available | o option | ✓ included

Acrylic color



Cabinet



*In case of minimum power connection, the hot tub pump(s) and heating unit cannot be operated simultaneously.



SWIMLINE



New
Product

RIO GRANDE 2019 W-FLOW SYSTEM

The new Rio Grande 2019 W-Flow swim spa is the result of a long development process. It is the perfect combination of a well-equipped spa and a swimming pool used as gym equipment suitable for a complete workout. The inner width of the swim area is almost 2 meters, its length is 314 cm.

Dimensions	6000 × 2350 × 1470 mm
Reclining / Sitting places	swim area / 1 reclining-, 5 sitting places
Net weight (kg) / Water amount (l)	1,200 kg/6,890 l
Frame	Stainless steel
Opt. power requirement	1×33A 230V/50Hz or 3×16A 400V/50Hz
Min. power requirement* (spa)	1×20A 230V/50Hz
Opt. power requirement	1×44A 230V/50Hz or 3×16A 400V/50Hz
Min. power requirement* (swim area)	1×31A 230V/50Hz
Total number of jets	40 pcs
Illuminated fountain	3 × 3 pcs
Waterfall	1 pc
Hydro massage pump	2 x 3 HP, single speed + Circulation pump
Counter-current pump	3 x double speed (Gecko) + Circulation pump
Water sanitization	2 x UV-C + antibacterial filter
Chromotherapy LED illumination	16 + 18 pcs LEDs
Sound system	Aquasoul™ Pro 4.1
SmartPhone app – wifi connection	Yes
Swimming stick	yes
Heat exchanger preparation	yes
Thermo cover	yes

Acrylic color



Cabinet

New
Product

RIO GRANDE 2019 TURBINE

The inner design of the Rio Grande 2019 hydro massage swim spa parts is the same as the ergonomic design from the popular Wellis Malaga 2018. Due to the 40 hydro massage jets, bathers can have the best possible massage experience.

Dimensions	6000 × 2350 × 1470 mm
Reclining / Sitting places	swim area / 1 reclining-, 5 sitting places
Net weight (kg) / Water amount (l)	1,200 kg/6,890 l
Frame	Stainless steel
Opt. power requirement	1×33A 230V/50Hz or 3×16A 400V/50Hz
Min. power requirement* (spa)	1×20A 230V/50Hz
Opt. power requirement	1×22A 230V/50Hz or 3×16A 400V/50Hz
Min. power requirement* (swim area)	1×9A 230V/50Hz
Total number of jets	40 pcs
Illuminated fountain	3 × 3 pcs
Waterfall	1 pc
Hydro massage pump	2 x 3 HP, single speed + Circulation pump
Counter-current pump	Turbine + Circulation pump
Water sanitization	2 x UV-C + antibacterial filter
Chromotherapy LED illumination	16 + 18 pcs LEDs
Sound system	Aquasoul™ Pro 4.1
SmartPhone app – wifi connection	yes
Swimming stick	yes
Heat exchanger preparation	yes
Thermo cover	yes

Acrylic color



Cabinet





AMAZONAS POWER

Whether it is pleasant relaxation with the family or swimming as a form of work-out or relaxation, Amazonas Power swim spa can offer both.

Dimensions	5460 × 2300 × 1500 mm
Reclining / Sitting places	swim area / 3 sitting places
Net weight (kg) / Water amount (l)	970 kg/7,342 l
Frame	Stainless steel frame
Opt. power requirement	1×48A 230V/50Hz or 3×16A 400V/50Hz
Min. power requirement*	1×32A 230V/50Hz
Total number of jets	36 pcs + 3 river jets
Waterfall	1 pc
Hydro massage pump	1 × 3 HP, double speed
Counter-current pump	3 × 2 HP, single speed
Circulation pump	1.2 HP circulation pump
Water sanitization	UV-C + antibacterial filter
Chromotherapy LED illumination	25 pcs exclusive LEDs + Central
Sound system	-
SmartPhone app – wifi connection	yes
Auxiliary control panel	1-button
Swimming stick	yes
Heat exchanger preparation	yes
Thermo cover	yes

AMAZONAS TURBINE

Thanks to a high-performance W-Power turbine, you can enjoy long hours of pleasure swimming in the Amazonas swim spa. The counter current W-Power turbine can circulate 50-160 m³ water per hour, with a power requirement of only 7A.

Dimensions	5460 × 2300 × 1500 mm
Reclining / Sitting places	swim area / 3 sitting places
Net weight (kg) / Water amount (l)	970 kg/7,342 l
Frame	Stainless steel frame
Opt. power requirement	1×36A 230V/50Hz or 3×16A 400V/50Hz
Min. power requirement*	1×23A 230V/50Hz
Total number of jets	36 pcs
Waterfall	1 pc
Hydro massage pump	1 × 3 HP, double speed
Counter-current pump	W-Power Turbine 50-160 m ³ /h
Circulation pump	1.2 HP circulation pump
Water sanitization	UV-C + antibacterial filter
Chromotherapy LED illumination	25 pcs exclusive LEDs + Central
Sound system	-
SmartPhone app – wifi connection	yes
Auxiliary control panel	1-button
Swimming stick	yes
Heat exchanger preparation	yes
Thermo cover	yes

Acrylic color



Cabinet



Acrylic color



Cabinet



*In case of minimum power connection, the hot tub pump(s) and heating unit cannot be operated simultaneously.



DANUBE POWER

Its three-pump system provides a capacity of 9 HP, which ensures perfect counter current. Thanks to power development, the 3 counter current pumps and the circulation pump ensure an excellent swim training experience.

Dimensions	4000 × 2300 × 1500 mm
Reclining / Sitting places	swim area
Net weight (kg) / Water amount (l)	750 kg/5,699 l
Frame	Stainless steel frame
Opt. power requirement	1×38A 230V/50Hz or 3×16A 400V/50Hz
Min. power requirement*	1×25A 230V/50Hz
Total number of jets	3 pcs river jets
Illuminated waterfall	-
Counter-current pump (swim spa)	3 × 3 HP, single speed
Circulation pump	1.2 HP circulation pump
Water sanitization	UV-C + antibacterial filter
Chromotherapy LED illumination	21 pc exclusive LEDs + Central
Sound system	-
SmartPhone app – wifi connection	yes
Swimming stick	yes
Heat exchanger preparation	yes
Thermo cover	yes

Acrylic color



Aabinet



DANUBE TURBINE

The Danube swim spa – equipped with a W-power turbine – may act as a personal trainer even for a professional athlete. In addition to the Swimming stick provided as standard equipment, choose a rowing kit and an aquabike to design a complete training circuit for yourself.

Dimensions	4000 × 2300 × 1500 mm
Reclining / Sitting places	swim area
Net weight (kg) / Water amount (l)	750 kg/5,699 l
Frame	Stainless steel frame
Opt. power requirement	1×26A 230V/50Hz or 3×16A 400V/50Hz
Min. power requirement*	1×13A 230V/50Hz
Total number of jets	-
Illuminated waterfall	-
Counter-current pump (swim spa)	W-Power Turbine 50-160 m ³ /h
Circulation pump	1.2 HP circulation pump
Water sanitization	UV-C + antibacterial filter
Chromotherapy LED illumination	21 pc exclusive LEDs + Central
Sound system	-
SmartPhone app – wifi connection	yes
Swimming stick	yes
Heat exchanger preparation	yes
Thermo cover	yes

Acrylic color



Cabinet



*In case of minimum power connection, the hot tub pump(s) and heating unit cannot be operated simultaneously.



OPTIONS	RIO GRANDE 2019 W-FLOW	RIO GRANDE 2019 TURBINE	AMAZONAS POWER	AMAZONAS TURBINE	DANUBE POWER	DANUBE TURBINE
Scandinavian insulation	o	o	o	o	o	o
Illuminated jets (up to 50 jets)	o	o	o	o	✘	✘
Illuminated jets (from 51 jets)	✘	✘	✘	✘	✘	✘
Oxygen therapy™ system	✘	✘	✘	✘	✘	✘
Aquasoul™ Pro 4.1 sound system	✓	✓	o	o	✘	✘
Aquasoul™ Pro 2.1 sound system	✘	✘	✘	✘	o	o
Rowing kit	o	o	o	o	o	o
Aquabike	o	o	o	o	o	o
Training kit	o	o	o	o	o	o
Semi-inground side panel	o	o	✘	✘	✘	✘

✘ not available | o option | ✓ included



INOXLINE



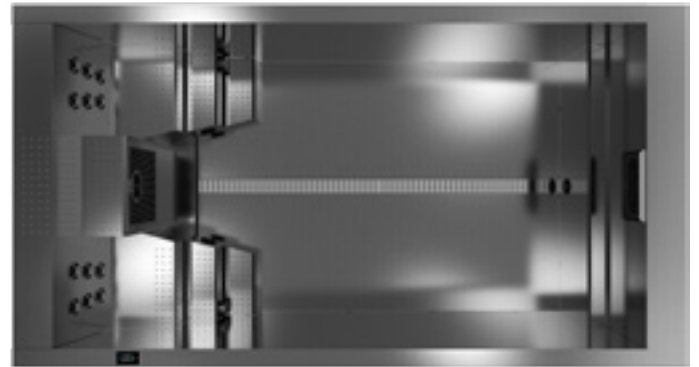


VOLCANO

Our Volcano steel tub has several impressive advantages: the stainless steel is resistant to UV-rays, frost and thermal stresses. Thanks to a weather-proof finish, it is suitable for both indoor and outdoor use.

Dimensions	2270 × 2570 × 900 mm
Reclining / Sitting places	2 reclining / 4 sitting places
Net weight (kg) / Water amount (l)	350 kg/1,780 l
Frame	Stainless steel frame
Opt. power requirement	1×27A 230V/50Hz or 3×16A 400V/50Hz
Min. power requirement*	1×14A 230V/50Hz
Total number of jets	38 pcs
Hydro massage pump	2 × 2 HP, single speed
Circulation pump	W-EC pump (0.19 kW)
Water sanitization	UV-C + antibacterial filter
Chromotherapy LED illumination	central
SmartPhone app – wifi connection	yes
EPH protection	yes
Thermo cover	yes

Cabinet



KONGO

The design of our stainless steel Kongo swim spa is unique in the market. The side staircase, with its built-in massage functions, provides a comfortable way to relax, while you get a perfect swimming experience thanks to the new, turbine powered system.

Dimensions	4280 × 2300 × 1430 mm
Reclining / Sitting places	swim area / 2 sitting places
Net weight (kg) / Water amount (l)	1,100 kg/9,114 l
Frame	Stainless steel frame
Opt. power requirement	1×33A 230V/50Hz or 3×16A 400V/50Hz
Min. power requirement*	1×20A 230V/50Hz
Total number of jets	12 pcs
Hydro massage pump	1 × 2 HP, single speed
Circulation pump	1 x 1.2 HP circulation pump
Water sanitization	W-Power Turbine 50-160 m³/h
Chromotherapy LED illumination	UV-C + antibacterial filter
SmartPhone app – wifi connection	central
SmartPhone app – wifi connection	yes
EPH protection	yes
Thermo cover	yes

Cabinet



*In case of minimum power connection, the hot tub pump(s) and heating unit cannot be operated simultaneously.



OPTIONS	VOLCANO	KONGO
Scandinavian insulation	○	○
Illuminated jets (up to 50 jets)	○	○
Heat exchanger preparation	✘	✓

✘ not available | ○ option | ✓ included

ACCESSORIES

**Spa grip**

This stainless steel grip covered with anti-slip foam can be mounted on the side panel of any spa. It ensures a comfortable and safe way to get in and out of the spa.

**Spaziano tray**

A convenient place for spa users to place snacks, drinks, cell phones, or eyeglasses. Stainless steel post that installs on any spa model.

**Spa Umbrella**

The spa umbrella, which can be fixed to any spa, ensures pleasant spa use even in hot sunshine. The umbrella can be opened and folded with using a manual handle bar. The height is adjustable with a button.

**Floating chemical dispenser**

It ensures a steady flow of chemicals. The chemical in the dispenser does not come into contact with the tub shell, therefore there is no damage or discoloration. Multi-stage, adjustable chemical dispensing.

**Filter cleaning machine**

The purpose of the Wellis filter cleaning system is to clean the your spa filter in a flash.

**WelliStep**

With its 83 cm wide anti-slip steps, this spa step is the best choice for your spa. Dimensions: 83 x 70 x 39 cm

**Steel handrail**

This handrail made of stainless steel can be fixed to the ground separately from the spa, providing safe support when getting in or out.

ACCESSORIES

**Swim spa stairs**

Dimension with rail: 147x165x93.5 cm
Dimension without rail: 147x77x88 cm

**Towel bar**

A useful accessory for your spa, where you can store your towel or clothes safe from splashing water or from getting wrinkled.

**Bromine salt**

Water sanitizer granulate with sodium-bromide content for spas equipped with the in.Clear (bromide generating) system. 2.2 kg/box
Dosage: about 0,143 kg bromine salt per ~100 l water.

**Wellis Crystal spa chemical package**

Package content:
2 l Wellis Watertreatment; 18 x chlorine tablets; 1 dispenser (for chlorine tablets); 1 microfiber cloth.

**Wellis Crystal swim spa chemical package**

Package content:
26 x water soluble packs (100 g), 1 chlorine tablet holder, 30 x chlorine tablets 90%/20g, 1 microfiber cloth, instructions for use.

**Wellis Crystal Pool check 5in1 test strip for water analysis**

Test strips for measuring total water hardness, total chlorine, free chlorine, total alkalinity and pH. 50 pcs/box.

**Spa Cleaner**

Specially designed for the cleaning of spa water pipes. Removes lime scale deposits and impurities. It is used when the spa water is freshened or exchanged. As a manufacturer, we recommend spa water be changed quarterly.

ACCESSORIES

ACCESSORIES



Active charcoal filter for spas

When your spa is filled through an active charcoal pre-filter, you get crystal clear bathwater. Sufficient for pre-filtering 8,000 l water.



Xtreme™ winter spa cover

The Xtreme™ winter spa covers are in general 5 cm thicker than traditional thermo covers. It is recommended for users who wish to benefit from the positive effects of hot bathing even during cold winters.



Water softener for spas

If your spa is filled with demineralized water through the pre-filter with resin, it will prevent limestone buildup on mechanical devices, and therefore increase their service life. Sufficient for pre-filtering 8,000 l water.



Easy-Lifter cover lifter

With the use of the Easy-Lifter cover lifter, one person can easily remove the thermo cover. It fits all spa sizes. Durable, powder-spayed surface. Non-slip handle.



Antibacterial filter cartridges

Paper filters with antibacterial coated, with their increased surface fibres, have several times the capacity of traditional filter cartridges.



Universal cover lifter

Removing the cover is easier than ever with the universal cover lifter. In order to ensure proper operation, there must be a space of at least 60 cm between the side of the spa and the wall. Can be used with Xtreme™ Thermo cover as well!



Superfine paper filters

They filter mechanical impurities and prevent bacteria overgrowth in spa water.



Spa bag

The Wellis Spa bag provides protection against UV-rays, so you can enjoy your spa, in pristine condition, for a long time.



Wellis Crystal filter cleaner

To keep the spa water crystal clear, the spa filter must be cleaned once a week using the Wellis Crystal filter cleaner. Depending on use, this process may be performed more frequently as well.



Spa wand

With the vacuum spa cleaner, the hand-held Spa wand, you may collect impurities from the bottom of the spa, the steps or the surface of water – without having to drain the water. It is delivered with special heads.



Aroma oil for spas

Fragrances: eucalyptus, lavender, mediterranean, orange bloom, rosemary.



Manual filter cartridge cleaner

The filters can be cleaned simply and quickly with the manual filter cartridge cleaner. Eight lamellas can be cleaned at the same time without splashing; it can be connected to the garden hose.



Thermo cover

The purpose of using a thermo cover is to keep the spa heat at a pre-set level. A special foam ensures thermal insulation, covered with stylish UV-resistant artificial leather. The thermo cover is 120 mm thick in the middle, sloping (70 mm) towards the sides of the spa to ensure that snow and rain drain off easily.



Spa booster pillow

This comfortable pillow fits any spa; it can be fixed and adjusted to the water level. Sturdy, heat resistant material, easy to fill, standard pipe fitting, suction cup for non-slip feature.

Thermo cover colors



Chocolate brown



Dark grey



Light grey



Sand beige







HELIOS HEMLOCK INFRARED SAUNA

- 82.8 × 100.7 × 194 cm
- Indoor Redlight™ infrared sauna for 1 person
- Canadian hemlock tree
- 6-mm thick tinted safety glass door and sides
- chromotherapy LED illumination
- Bluetooth receiver (for playing music)
- 2 x speakers, ventilation holes
- 4 pcs energy saving RedLight heaters (1 back – 350W, 2 front – 400W/pc, 1 calf level – 500W)
- energy requirement: 1.65 kW



Bluetooth receiver unit with USB and SD card inlet to ensure that you can listen to your favorite songs while you relax!



SOLARIS HEMLOCK INFRARED SAUNA

- 131.4 × 99.3 × 194 cm
- Indoor Redlight™ infrared sauna for 2 people
- Canadian hemlock tree
- 6-mm thick tinted safety glass door and sides
- chromotherapy LED illumination
- Bluetooth receiver (for playing music)
- 2 x speakers, ventilation holes
- 5 pcs energy saving RedLight heaters (2 back – 350W/pc, 2 front – 400W/pc, 1 calf level – 500W)
- energy requirement: 2 kW



SUNDANCE HEMLOCK INFRARED SAUNA

- 159.4 x 99.3 x 194 cm
- Indoor infrared sauna for 3 people
- Canadian hemlock tree
- 6-mm thick tinted safety glass door and sides
- chromotherapy LED illumination
- Bluetooth receiver (for playing music)
- 2 speakers
- ventilation holes
- 6 pcs energy saving RedLight heaters
(3 back – 350W/pc, 2 front – 400W/pc, 1 calf level – 500W)
- energy requirement: 2.35 kW



ECLIPSE HEMLOCK COMBINED SAUNA

- 204.3 x 200.8 x 205.5 cm
- Redlight™ infrared sauna combined with a Finnish sauna for 5-6 people
- Canadian hemlock tree
- 6-mm thick tinted safety glass door and sides
- chromotherapy LED illumination
- Bluetooth receiver (for playing music)
- 2 speakers
- ventilation holes
- 8 pcs RedLight™ infrared sauna heaters
2.8 kW/230 V (3 x 350W, 3 x 350W, 2 x 350W)
- Heater for Finnish sauna: 8 kW/380 V
- heat and humidity meter
- wooden pail with spoon
- sandglass
- lava rock



IGNEUS HEMLOCK FINNISH SAUNA

- 150 × 105 × 190 cm
- Indoor Finnish sauna for 2 people
- Canadian hemlock tree
- 8-mm thick safety glass door and sides
- fixed floor grid, removable stove protection grid
- heat-resistant luminary with wood panel
- ventilation holes
- Sawo furnace for Finnish sauna: 4.5 kW/220 V
- heat and humidity meter
- wooden pail with spoon
- sandglass
- lava rock



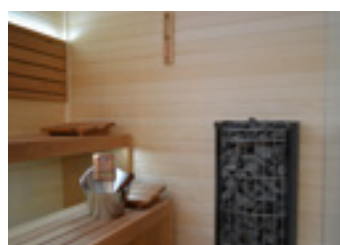
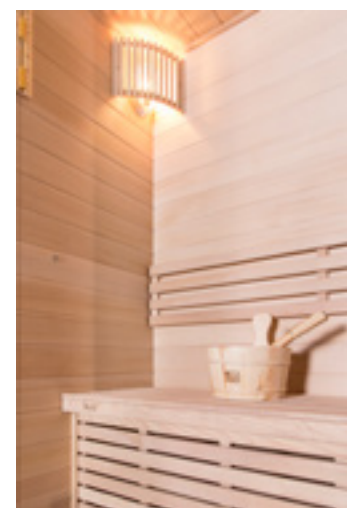
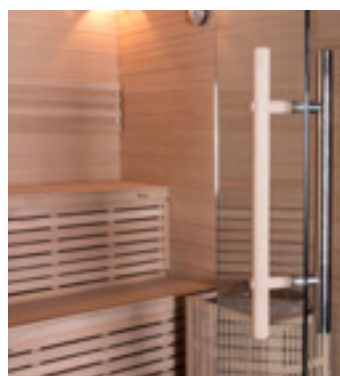
SERENIS HEMLOCK FINNISH SAUNA

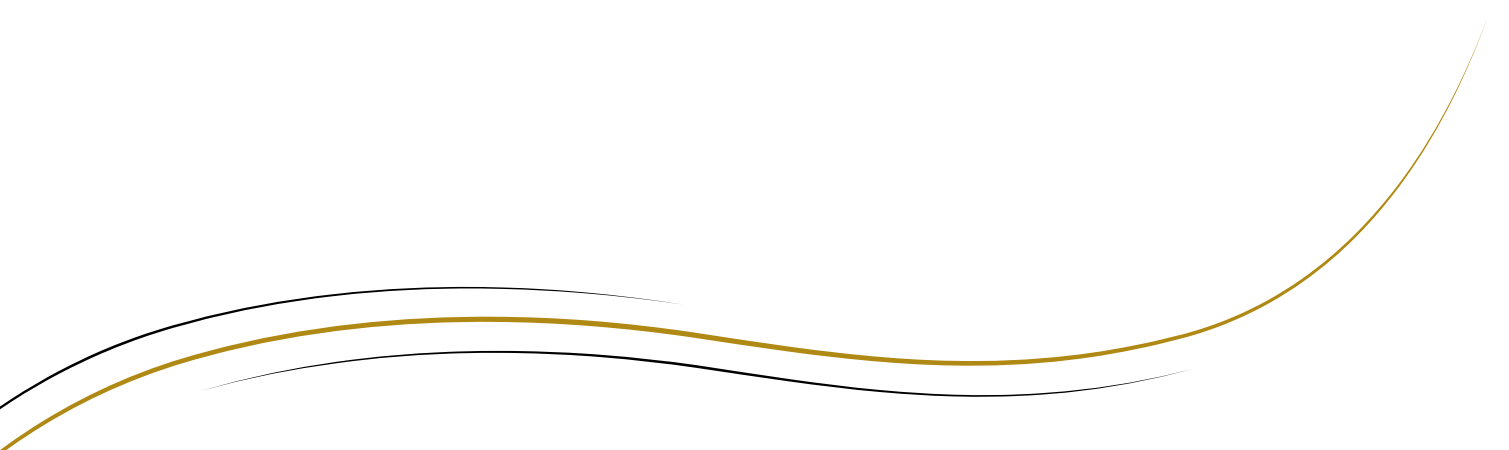
- 180 × 150 × 210 cm
- Indoor Finnish sauna for 4 people
- Canadian hemlock tree
- 8-mm thick safety glass door and sides
- fixed floor grid
- removable stove protection grid
- heat-resistant luminary with wood panel
- ventilation holes
- Sawo furnace for Finnish sauna: 8 kW/380 V
- heat and humidity meter
- wooden pail with spoon
- sandglass
- lava rock



CALIDUS HEMLOCK FINNISH SAUNA

- 200 × 170 × 210 cm
- Indoor Finnish sauna for 5-6 people
- Canadian hemlock tree
- 8-mm thick safety glass door and sides
- fixed floor grid
- removable stove protection grid
- heat-resistant luminary with wood panel
- ventilation holes
- Sawo furnace for Finnish sauna: 9 kW/380 V
- heat and humidity meter
- wooden pail with spoon
- sandglass
- lava rock





The products included in the catalogue are for illustration purposes only, and may not always match the specifications of the advertised product. Wellis reserves the right to modify the products – including the product range – without prior notice, since they are valid at the time they are delivered to the printing press. We may not be made responsible for printing errors.

www.wellis.com
MAR0633